

Infinitem Procure

B2B/ Procurement Solutions



Enterprise E-Procurement Solutions

Versatile

High Performance

Market Place

Market Exchange

Market Vortal

Infinitem Procure

Infinitem Procure contains a full collection of modular servlets and applications engines that are customized and modified to operate in different business models, which are:

1. One to Many – Market Exchange
2. Many to Many – Market Exchange
3. Vertical Industry Portal

E-BUSINESS MODELS	ONE TO MANY - MARKET EXCHANGE	MANY TO MANY - MARKET EXCHANGE
	<p>descriptions: An anchor tenant accessing a centralized universal database containing catalogs from multiple suppliers.</p> <p>Market Exchange acts as a private procurement system for the Master tenant and its group of companies to procure MRO related products.</p> <p>revenue model: Operate by the Anchor Tenant; Cost saving from centralized procurement with bulk discounts</p>	<p>descriptions: Multiple anchor tenants accessing a centralized universal database containing catalogs from multiple suppliers.</p> <p>Market Exchange acts as a private procurement system for the Master tenant and its group of companies to procure MRO related products.</p> <p>revenue model: Operate by the Anchor Tenant; Cost saving from centralized procurement with bulk discounts</p>

Infinitem Procure B2B/ Procurement Solutions

PRODUCT FEATURES

Universal Product Catalog

- * Multiple catalogs from multiple suppliers.
- * Detailed product descriptions, including multimedia contents of the products.
- * Price breaks and multi-tiered pricing for each product.
- * Bulk purchase discount.
- * Multiple pricing views.
- * Product specific catalog page layout and templates

Buying Assistant

- * Product Searching – Buyer can do a quick listing of all relevant suppliers and navigate into each supplier for details.
- * Comparison Purchase – Buyer can do cross supplier search and compare multiple products in one screen.
- * Tender / RFQ – For ad-hoc or extraordinary purchases, buyer can request for tender from suppliers.

Approval Process

- * Users are established under an ownership hierarchy for easy management.
- * An extensive permission structure assures complete control over end-users.
- * Supervisors can set end-user permissions and defaults.
- * End-users are setup in the system with a maximum purchase limit for each purchase order.

Procurement Process

- * Buyers select products from the catalog and create purchase orders.
- * Cost center account codes are assigned for each purchase order.
- * Multiple suppliers can be selected for each purchase order. The system automatically creates separate purchase orders for each supplier.
- * Purchase orders are automatically approved by the buyer.
- * Vendors receive the purchase order and create invoices.

Payment Options

- * Supports multiple payment methods.
- * Secure Electronic Transfer (SET)
- * Secured Socket Layer (SSL)
- * Batch Processing/Credit Card
- * Cheque/Money Order
- * TT Transfer
- * Cash On delivery

Order Confirmation

- * Each purchase requisition is tracked for its status.
- * The order status is automatically updated and turned into purchase order.
- * Detailed order tracking and reporting.

can be customized
Exchange
Market Place
Market Portal

TO MANY - MARKET PLACE

Market Place is an ideal model targeted at Application Service Provider (ASP) to leases procurement services on a monthly rental basis. Their customer can open an account and start using the system within hours.

Full features and functionalities for all the tenants.

Operate by the ASP Operator; Membership fees – per annum; Transaction fees – per transaction

VERTICAL INDUSTRY PORTAL - MARKET PORTAL

descriptions: An industry specific ASP based Procurement Portal, very similar to Market Place except the buyers and sellers are all from the same industry.

The catalog system are specialize and specific where multiple buyers & sellers exchange information & quotes.

revenue model: Operate by the ASP Operator Membership fees – per annum ; Transaction fees – per transaction ; advertising fees.

Access

from the on-line catalog to create purchase requisitions. Fees can be assigned to each line item for accounting

included on the same requisition. The system generate separate purchase orders for each cost center and each

Automatically created when the buyer or supervisor enter their purchase authorization code.

purchase order electronically through the system, and fulfill

Payment options including SET, SSL, WorldPAY, etc
Transaction [SET]
[SSL]
Card Forms

Order and Tracking

Order is tracked on a historical basis along with the current

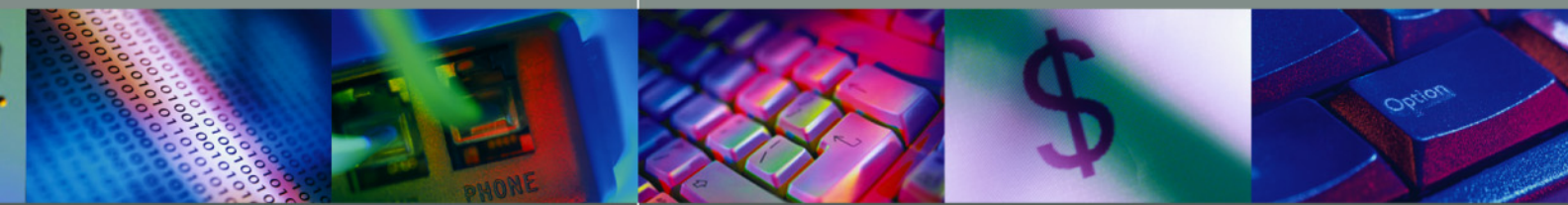
Automatically updated when requisitions have been accepted and purchase orders, allowing the buyer to track its progress. Updates occurs for each line item of every requisition.

On-line Tracking of Shipment

- * When the vendor ships the order, they are prompted to complete shipping details which includes date shipped, quantity shipped, and carrier shipping reference number.
- * Suppliers automatically update the order status when they accept and ship a purchase order.
- * The shipping details are available by line item for every purchase order.

Supplier Module

- * Suppliers use the same Web user interface to access the procurement system, and are provided additional functionality.
- * Suppliers can add new products to the staging area where they will be included in the system once approved.
- * Price and availability information can be added, deleted or edited on-line.
- * Suppliers can review and accept purchase orders on-line.
- * Supplier products and prices can be mass-imported into the staging area through the Catalog Update utility.
- * Suppliers are able to monitor product back-order.



BENEFITS

area	issues	benefits
Reduce purchasing costs and cycle time	<ul style="list-style-type: none"> ○ Time wastage in amassing product information & product comparison between suppliers. 	<ul style="list-style-type: none"> ○ Transfer and empower the purchasing of MRO items to end-users. ○ Direct access to a centrally located Universal Catalog. ○ Perform rapid product searches, selection, comparison and identification.
Automates Approval Process	<ul style="list-style-type: none"> ○ Traditional systems required an elaborate, time consuming, and error-prone approval process. ○ Significant time spend on routing information between suppliers and buyers & no value was added in this process. 	<ul style="list-style-type: none"> ○ Allow end-user credit limits setting. ○ Allow setting of end-user access limit to product catalogs. ○ Reporting capabilities that allow for auditing of each end-user's purchases.
Automates Procurement Processing	<ul style="list-style-type: none"> ○ Labor-intensive in matching the PO to the Invoices & receipt ○ Error-prone order process had to be re-submitted. ○ Required multiple entries of the same information 	<ul style="list-style-type: none"> ○ One-time data entry, saving time. ○ Multiple vendors ordering at same time. ○ Buyers can focus on project-based purchases and vendor selections. ○ Online checking on all orders and status. ○ Accounting information is detailed on each order and tracked throughout the system. ○ Each line item can be assigned a cost center by the end-user.
Connect to multiple suppliers and back-end systems	<ul style="list-style-type: none"> ○ Traditionally, most systems linked to larger suppliers systems through EDI. ○ EDI works well with several suppliers, but could not be implemented across all trading partners. 	<ul style="list-style-type: none"> ○ Support multiple organizations and buying processes with one procurement application Integrate seamlessly with existing enterprise systems. ○ Suppliers using multiple data standards can update the Universal Catalog information. ○ Orders are transmitted directly to suppliers via the Internet

Architecture Features

Open industry standards are followed throughout the architecture including ODBC, XML, EJB, SQL, NT, UNIX, SSL, HTML, JAVA, HTTP.

The user interface is Web based and is platform independent.

End-users receive the most current version of the user interface each time they use the system.

End-users can access the system via the Internet, Intranet, Extranet, LAN or a private network.

The supported web servers are Netscape Enterprise Server and Microsoft IIS.

The supported operating platforms are Windows NT or UNIX, Solaris.

The supported database platforms are Oracle, DB2, Jasmine, SQL and other ODBC compliant database.

The Administrator application can connect via a LAN or remotely through the Internet.

SSL security is supported with optional certificate support.

Legacy systems are integrated through ODBC, SQL links or other standard methods.

Third party software is supported for payment processing options and sales tax calculations.